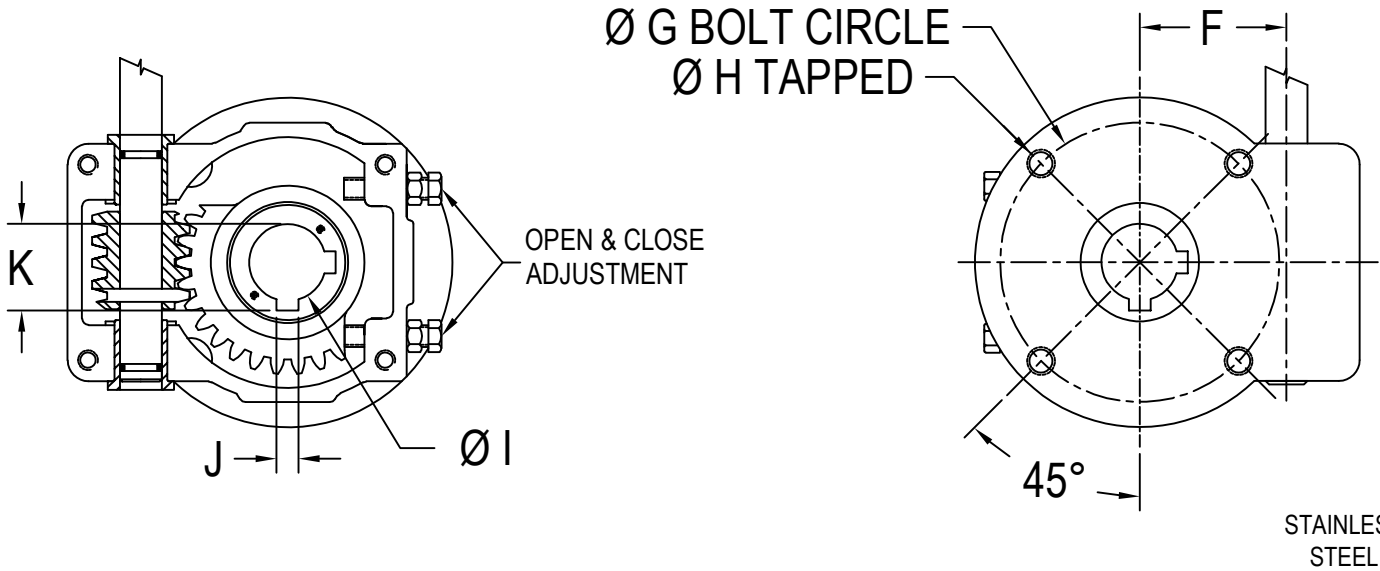
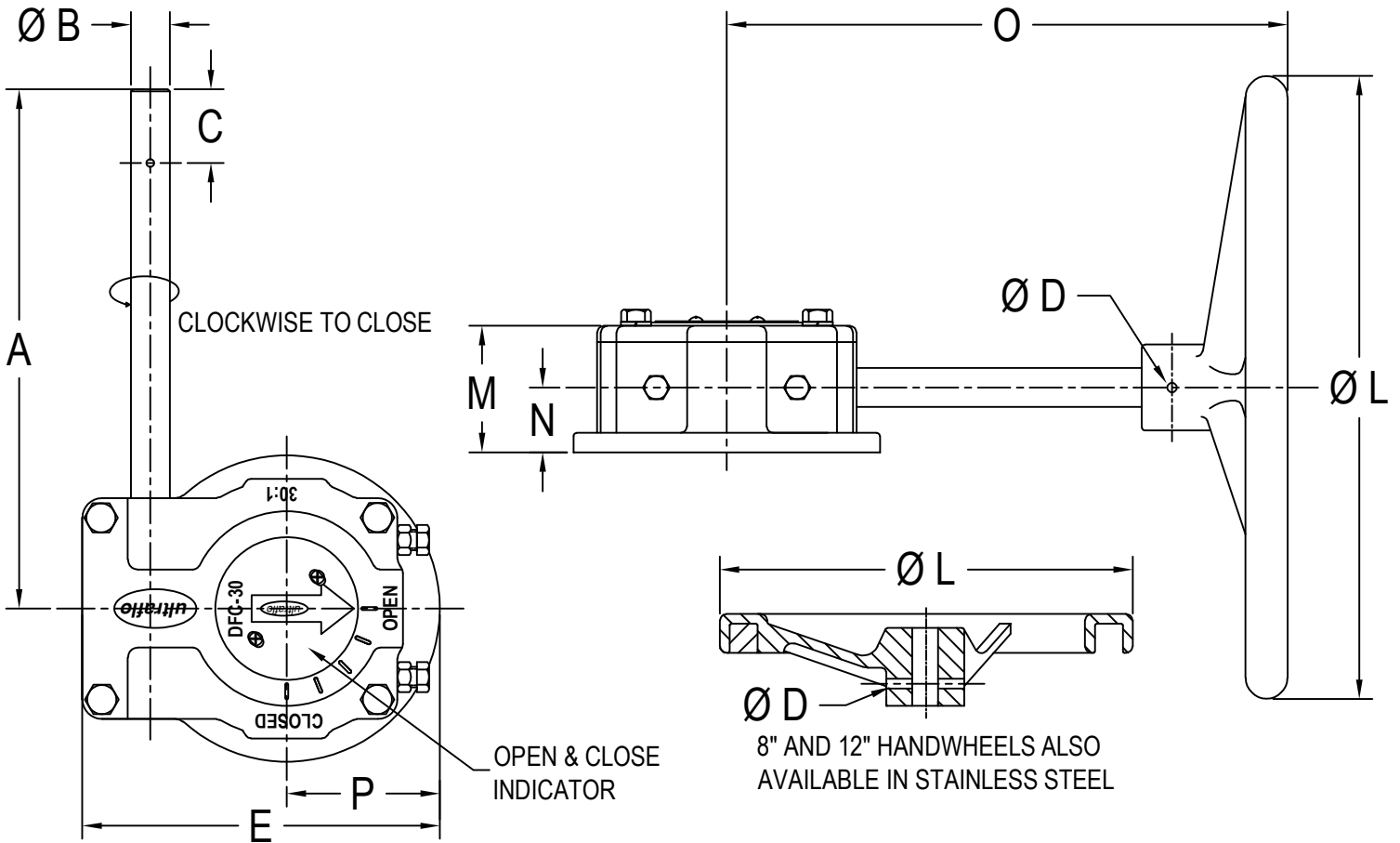


ATTENTION PLEASE CHECK THE ULTRAFLO WEBSITE AT www.ultraflovalve.com TO ENSURE YOU HAVE THE MOST RECENT COPY OF THIS DOCUMENT



STAINLESS STEEL

VALVE SIZE	RATIO	A	B	C	D	E	F	G	H	I	J	K	L	M	N	O	O	P
2"-6"	24:1	7.390	.625	1.066	.188	4.500	1.630	3.250	3/8-16	1.130	.252	1.255	8"	2.583	1.440	8.0190	7.666	1.750
8"-12"	30:1	10.00	.750	1.420	.188	6.890	2.620	5.000	1/2-13	1.130	.252	1.255	12"	2.528	1.250	11.182	10.570	2.953
14"-16"	50:1	11.00	.750	1.420	.188	7.485	3.120	5.000	1/2-13	1.380	.315	1.536	12"	3.215	1.690	11.825	N/A	2.953
18"-20"-24"	80:1	14.00	1.000	1.304	.250	10.445	4.560	6.500	3/4-10	1.880	.502	2.063	18"	4.374	2.380	15.071	N/A	4.146

ZONE	REV	DATE	BY	APP'D	ECN	DESCRIPTION
	6	04/15/21	TAL	JPL		CORRECTED Ø SYMBOL USAGE
A1	5	08/02/10	DSS	CJH	454	ADDED P WIDTH DIMENSION
D3	4	08/24/07	DSS	CJH		ADDED HEIGHT VIEW
	3	08/16/05	TJM	TJM		DIMENSIONAL CHG TO "A", "C" AND "L"
	2	09/24/04	TJM	TJM		DIMENSIONAL CHANGE TO "A" AND "L"
	1	08/21/04	TJM	TJM		COMBINE 14" AND 16"

Ultraflo Corporation
A Subsidiary of Bray International, Inc.

#8 Trautman Ind. Dr.
Ste. Genevieve, Mo.
63670 800-950-1762

DRAWN BY	TJM	NAME	TJM	DATE	07/01/04
CHECKED	TJM				07/01/04

PART: 24-30-50 AND 80 GEAR, 8"-12" AND 18" HANDWHEEL (237)
8-HW-063-SS AND 12-HW-75-SS (CF8M)

ECN: DWG: Manual Operators-3